

AHD 8CH HDD MOBILE DVR

Hardware User Manual

(Nysus 8 & 9)



Catalogue




Chapter 1 Accessories and Interface	1
1. MDVR and accessories	1
2. System connection	2
3. Panel introduction.....	3
4. Interfaces Definition.....	3
4.1 Power interface.....	3
4.2 I/O Interface definition.....	4
4.3 Aviation interface definition	4
Chapter 2 Installation and Application.....	4
1. SD card installation.....	4
2. Antennas Connection.....	5
3. Power Connection.....	5
4. Camera Connection	6
5. Monitor connection.....	6
6. I/O wires connection.....	7
6.1 IR extension connection	7
6.2 Alarm input connection.....	8
6.2.1 Application of Alarm input (Reverse assistant).....	8

Chapter 1 Accessories and Interface

1. MDVR and accessories

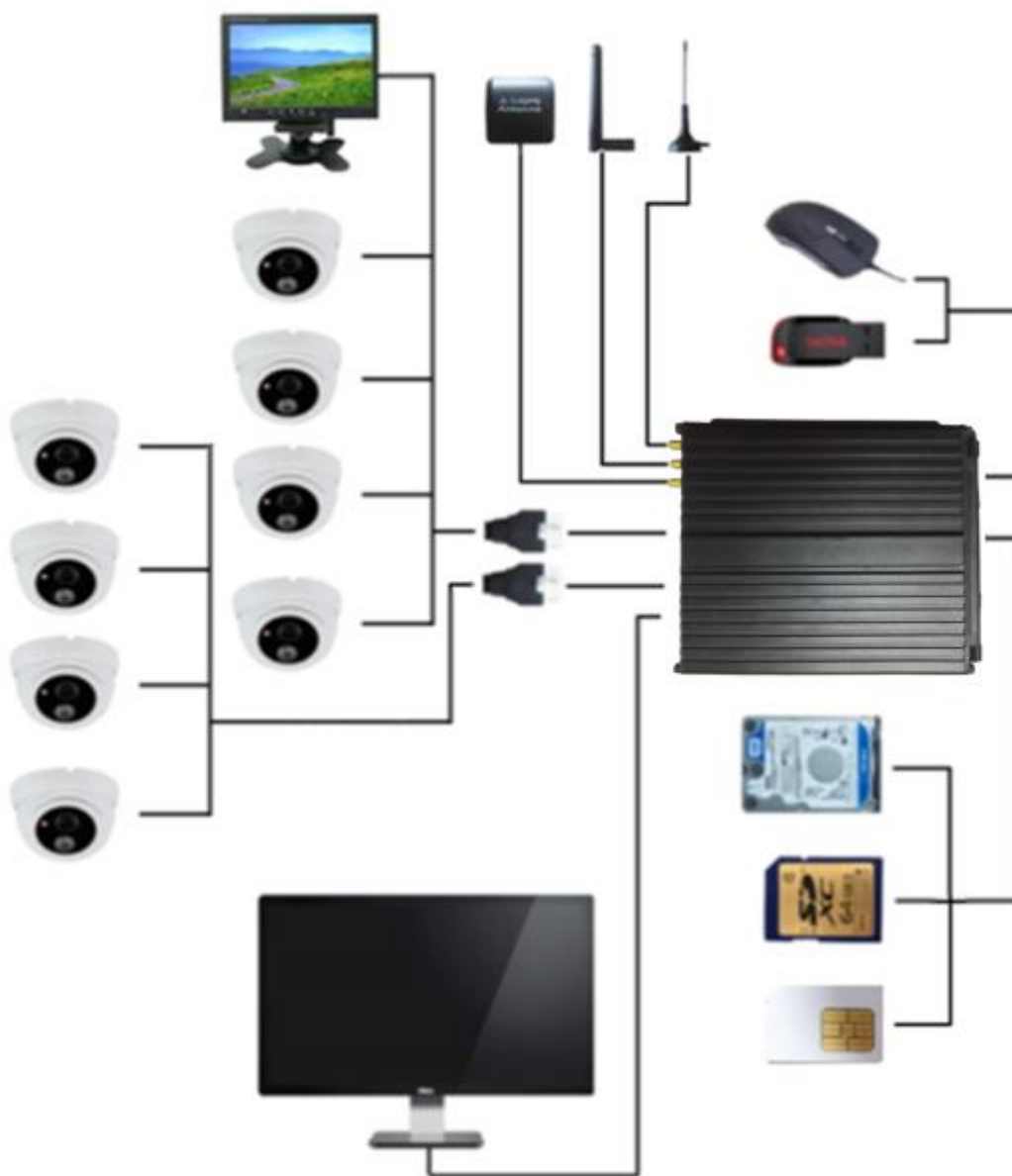
Before you use this product please check the accessories in the box. If there is anything missing or damaged please contact your supplier. The MDVR and accessories are listed as follows:

List of MDVR and accessories

Description	Picture	Quantity
MDVR		1
Power cable		1
I/O cable		1
AV cable 1		1
AV cable 2		1
Remote control (Optional)		1

IR Extension cable (Optional)		1
Mouse (Optional)		1

2. System connection



System connection

3. Panel introduction

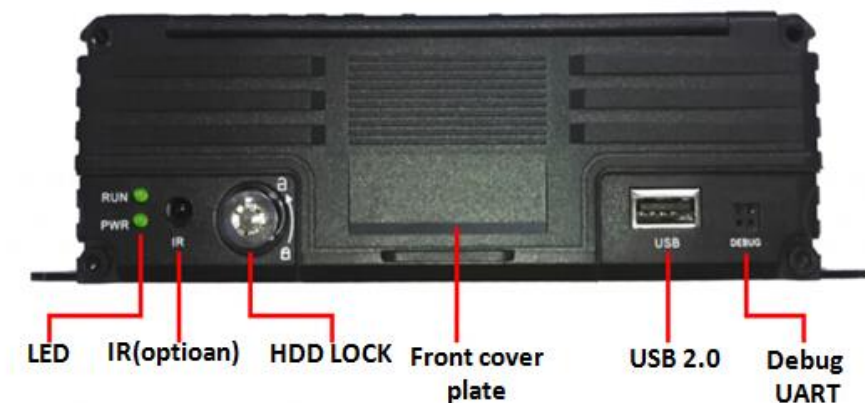


Figure 1. Front panel

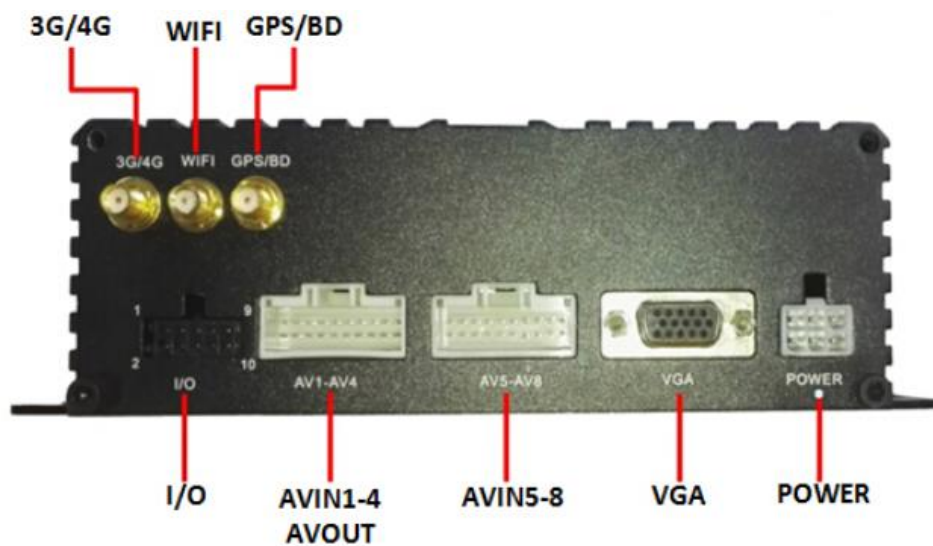


Figure 2. Back panel

4. Interfaces Definition

Here we introduce the definition of the interfaces of Power, I/O, AV Input & Output. See as following:

4.1 Power interface

10-36V	10-36V	ACC点火
GND	GND	GND

Figure 3. Power interface definition

4.2 I/O Interface definition



Figure 4. Front view of I/O Interface

I/O Interface definition

PIN	Colour	Definition	PIN	Colour	Definition
1	Blue	Alarm_OUT	2	Black	GND
3	Purple	Positive 2	4	Purple	Positive 1
5	Purple	Positive 4	6	Purple	Positive 3
7	Red	DC5V OUT	8	White	TXD(TTL)
9	Gray	IR	10	Yellow	RXD(TTL)

4.3 Aviation interface definition



AV-IN Camera Interface



AV-OUT Monitor Interface

Chapter 2 Installation and Application

1. The hard disk installation

Please insert the key into the hole of the lock on the front panel and turn it to unlock, then open the cover up, unscrew the hard disk mount screws counterclockwise and pull to remove the hard disk.



Figure 5. remove the hard disk box

2. SIM and SD card installation

Please insert the SD card & SIM card as indicated below, then close the front panel and lock it.



Figure 6. SIM and SD card Installation

3. Power Connection

Please connect the power as indicated below. Positive pole (RED) connects with power input 10-36V DC, ACC ignition (YELLOW) connects with 5-36V DC.



Figure 7. Power Connection

The yellow ignition wire is used to detect the ignition signal. We strongly suggest you connect it with the “RUN” terminal of the ignition switch, or any terminal in the vehicle’s fuse box which will only have power only when the vehicle is engaged (e.g. the FM radio)

Note: When testing the device, please connect both the red power wire and the yellow ignition wire with the positive pole, otherwise the device will not boot.

4. Camera Connection

You can connect the camera with the AV input cable directly, or by extension cable (optional). The AV cable is marked on each connector for cameras 1-8.



Figure 8. Cameras Connection

5. Monitor connection

The device supports VGA and CVBS output. You can switch the output mode to the one you need using the mouse or remote control.



Figure 9. Aviation interface monitor connection

6. I/O wires connection

Please see below for an explanation of the I/O cable. You will also find tips of the interface definition in the DVR menu.

6.1 IR extension connection

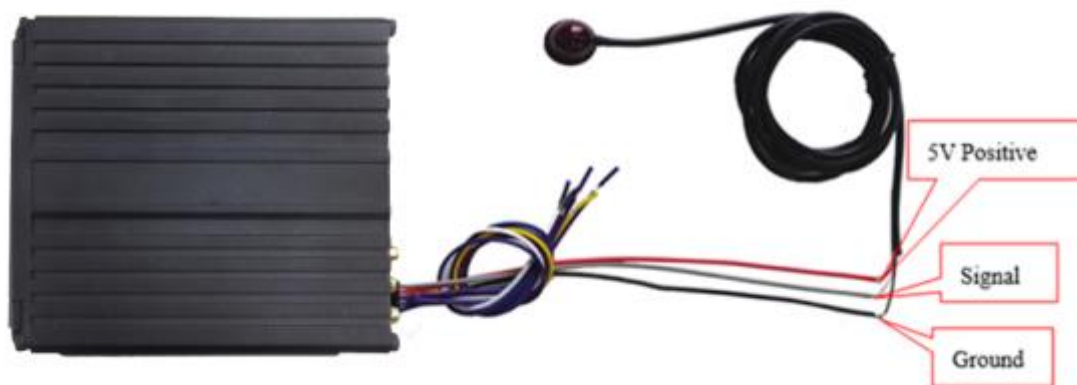


Figure 10. IR extension connection

I/O wires				IR extension cable	
PIN	Definition	Colour	↔	Colour	Definition
2	GND	Black	↔	Black	Ground
7	5V Output	Red	↔	Red	5V Power
9	IR extension	Grey	↔	White	Signal

IR Connection

6.2 Alarm input connection

This device provides 4 alarm inputs (All 4 Positive). You can connect the positive circuit to areas such as the reversing light, indicator etc for applications such as reverse monitor display and camera channels switching.

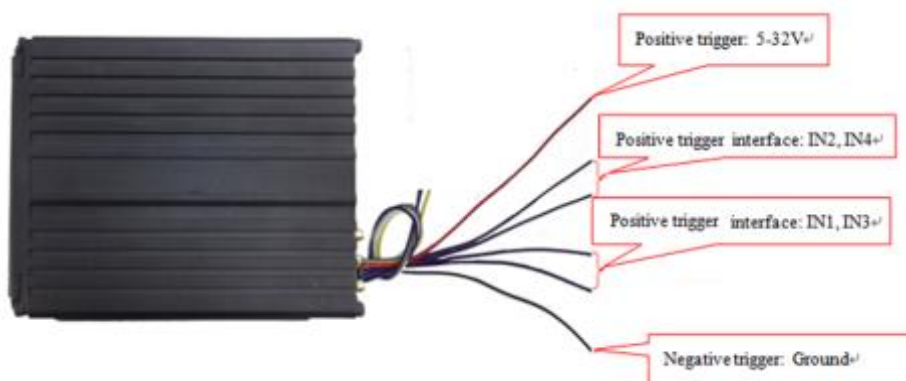


Figure 11. Trigger Input Connection

I/O wires				Alarm Trigger	
PIN	Definition	Colour	↔	Colour	Alarm trigger
3	Positive 2	Purple	↔	Red	Ground
5	Positive 4	Purple			
4	Positive 1	Purple	↔	Black	5-32V
6	Positive 3	Purple			

Trigger Input Connection

6.2.1 Application of trigger (Reverse assistant)

The device comes with Reverse assistant feature for example:
If you connect the wire of alarm input 2 with the positive pole of the reverse light's power. Please see below:



Figure 12. Reverse Assistance Connection

I/O wires				Alarm trigger	
PIN	Definition	Colour	↔	Colour	Alarm Trigger
7	Positive 2	Purple	↔	Red	Positive pole of Reverse light

Reverse Assistance Connection

To set it up in the DVR menu go to “Advanced” → “Rear Camera”, (see below), click “OK” to save your settings.



AV: Select the reverse camera's channel

InputSwitch: Select the alarm input number which connect with the reverse light's power

Note: When using reverse assistance use IN2, IN4 positive trigger to setup

When you enter reverse, the DVR will display the reversing camera's channel only. (See below):

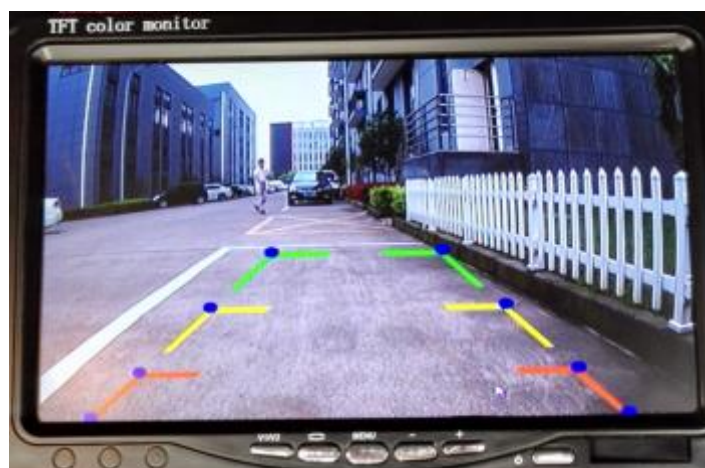


Figure 13. Reverse Assistance